



Romania

Investor Presentation

February 2020



Disclaimer



This presentation has been prepared by and is the sole responsibility of the Republic of Romania (the "Issuer"). It has not been reviewed, approved or endorsed by any manager retained by the Issuer. This presentation is provided for information purposes only. The contents of this presentation do not constitute or form part of an offer to sell or issue or any solicitation of any offer to purchase or subscribe for any securities for sale in any jurisdiction.

The information and opinions herein are believed to be reliable and have been obtained from sources believed to be reliable, but no representation or warranty, express or implied, is made with respect to the fairness, correctness, accuracy, reasonableness or completeness of the information and opinions. There is no obligation to update, modify or amend this presentation or to otherwise notify the recipient if any information, opinion, projection, forecast or estimate set forth herein changes or subsequently becomes inaccurate.

The information herein includes statements that constitute forward-looking statements. Such forward-looking statements are not guarantees of future performance and involve risks and uncertainties. Actual results may differ as a result of risks and uncertainties. Each recipient is strongly advised to seek its own independent advice in relation to any investment, financial, legal, tax, accounting or regulatory issues discussed herein. Analyses and opinions contained herein may be based on assumptions that, if altered, can change the analyses or opinions expressed. Nothing contained herein shall constitute any representation or warranty as to future performance of any security, credit, currency, rate or other market or economic measure. Furthermore, past performance is not necessarily indicative of future results. Romania disclaims liability for any loss arising out of or in connection with a recipient's use of, or reliance on, this presentation.

This presentation and the information contained herein is confidential and may not be reproduced, distributed or otherwise transmitted, in whole or in part, without the prior written consent of the Issuer. This document and/or the information contained herein, are not for publication or distribution, directly or indirectly, to persons in the United States (within the meaning of Regulation S under the Securities Act) or to entities in Canada, Australia or Japan or any other jurisdiction which prohibits the same except in compliance with applicable securities laws. Any failure to comply with this restriction may constitute a violation of United States securities laws and/or the securities laws of other countries.

By accepting this document you will be taken to have represented, warranted and undertaken that (i) you are a person to whom this presentation may be given (as described above); (ii) you have read and agree to comply with the contents of this notice; and (iii) you will treat and safeguard as strictly private and confidential all such information and take all reasonable steps to preserve such confidentiality.



Overview



Snapshot of Romania's Economy



Overview

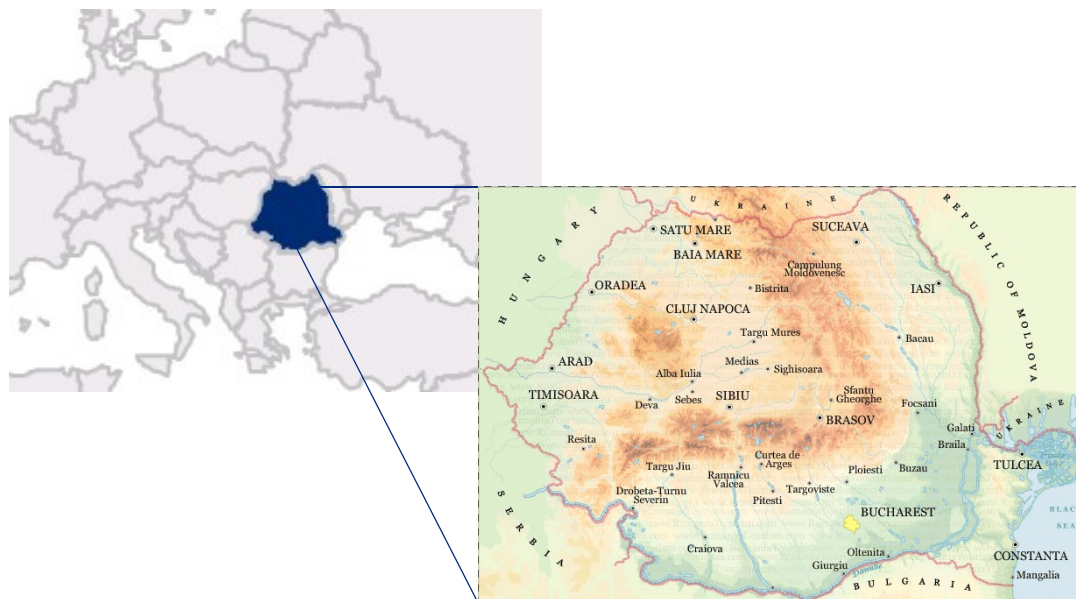
Strong Economic Growth

Sustainable Fiscal Policy

Prudent Public Debt Management

EU Funds Absorption

Area	238,391 km ²
Population (2019)	c. 19.4 million
Currency	New Romanian Leu (RON)
GDP (2018)	EUR 204.7 ^(s) billion
GDP per Capita (2018)	EUR 10,511 ^(s)
Average Real GDP Growth (2007–2018)	3.1%
Average Inflation Rate (2007–2018)	3.5%
Unemployment ⁽¹⁾ (January 2020)	3.9%
Public Debt / GDP (December 2019) ⁽²⁾	35.5%



S&P Global

MOODY'S

FitchRatings

BBB- / Negative since December 10, 2019

Baa3 / Stable since December 11, 2015, confirmed July 17, 2019

BBB- / Stable since July 4, 2011, confirmed November 8, 2019

Source: National Institute of Statistics, Eurostat.

(1) Unemployment as a % of active population, ILO methodology (Monthly seasonally adjusted data).

(2) According to EU methodology.

² (S) Semi-final Data.

Key Features of Romania's Credit Profile



Overview

Strong Economic Growth

Sustainable Fiscal Policy

Prudent Public Debt Management

EU Funds Absorption

Strong Macroeconomic Framework

- Romania had one of the highest growth rates in the EU during the last decade: the annual average GDP growth since the EU accession (2007) was 3.1% and accelerated to 4.5% during 2013–2018;
- After joining the EU, real convergence expressed in GDP per capita in PPS significantly improved from 39%⁽¹⁾ in 2006 to 65% in 2018 of EU average.
- Romania recorded in the first 9 months 2019 a growth of 4.0%, one of the fastest among EU member states.

Well Capitalized and Liquid Banking Sector

- NPL ratio⁽²⁾ showed a sustained downward trend (from 9.6% at end 2016 to 4.96% at end 2018 and 4.3% in November 2019).
- No public funds used to bail out local banks.
- Very well capitalized banking sector, with a total capital adequacy ratio of 19.7% as of September 2019.
- Stable exchange rate.

Improving Financial Sector

- Lasting FDI growth: 30.5% in 2016, 6.2% in 2017, by 9.8 % in 2018 and 1.1% y-o-y in Jan – Oct 2019⁽³⁾.
- Constant decrease of the share foreign currency denominated deposits and loans.

Low Public Debt

- Public Debt to GDP ratio of 35.5%⁽⁴⁾ at end of December 2019, increased compared to 34.7% at end of 2018⁽⁴⁾ (Eurostat, ESA methodology), but remains below the spike of 39.2%⁽⁵⁾ of 2014 as per Ministry of Public Finance data.
- Sustainable debt management policy continued.

(1) Source: Eurostat; (2) Under the EBA Methodology. The same observation applies to data under the national methodology; (3) Source: National Bank of Romania: <http://www.bnr.ro/Direct-investment---directional-principle-12352.aspx>; (4) According to EU methodology the debt to GDP ratio was calculated taking into consideration the sum of the GDP for the last four quarters (the source for GDP data is the NCSP Winter forecast, February 2020); (5) Ministry of Public Finance – "Government debt according to EU methodology historical data".

Stable and Resilient to External Risks



Overview

Strong Economic Growth

Sustainable Fiscal Policy

Prudent Public Debt Management

EU Funds Absorption

Pro EU and NATO

- All major political parties in Romania are officially committed to EU and NATO membership
- No extremist parties are popular in Romania
- Romania hosts a permanent NATO base and is part of the US Missile Defense Shield in Eastern Europe

Exposure to Brexit

- The Brexit process has had limited negative impact so far on Romania, the initial volatility subsiding over time
- Uncertainty about the Brexit effects still remain, but exposure to UK economy is relatively limited, compared to other EU Member States

Russia and Ukraine

- Trade relationships with Ukraine – small share in total foreign trade (less than 1%)
- Limited dependence on gas imports from Russia, since Romania is able to cover a large share of its gas consumption from domestic sources
- Very limited Russian presence in metallurgy, iron and steel and oil refining sectors
- No credit institutions with Russian or Ukrainian shareholding

Oil Prices

- The rise in oil prices will have a negative, but limited effect

Migrant Crisis

- Romania is not on the main Balkan immigration route and the effects from Middle Eastern / African immigration flows have been limited

Nominal Convergence Criteria



Overview

Strong Economic Growth

Sustainable Fiscal Policy

Prudent Public Debt Management

EU Funds Absorption

Convergence Criteria	Maastricht Requirements	Romania	Fulfilment of the criteria
Inflation rate (HICP) (% , annual average)	≤ 1.5 pp above 0.27% the average of the three best-performing EU Member States ⁽¹⁾	3.8% (November 2019)	No
Long-term interest rates (% p.a., annual average) ⁽²⁾	≤ 2 pp above -0.31% (average of the three best-performing EU Member States in terms of price stability)	4.32% (November 2019)	No
Exchange rate vs the euro ⁽³⁾ (2-year maximum percentage change)	$\pm 15\%$	+3.1 / -0.3% (December 2019)	Yes
General government deficit (% of GDP) ⁽⁴⁾	$\leq 3\%$	4.6%	No
Government debt (% of GDP) ⁽⁵⁾	$\leq 60\%$	35.5%	Yes

(1) The reference value for November 2019 was calculated by NBR taking into account Italy, Portugal and Belgium, based on Eurostat data.

(2) The reference value for November 2019 was calculated by NBR taking into account Germany, Denmark and Luxembourg, based on Eurostat data.

(3) The reference value for December 2019 was calculated by NBR, based on Eurostat data. Maximum percentage deviations of the bilateral exchange rate against the euro from its December 2017 average level in January 2017 to November 2019 based on daily data at business frequency. An upward / downward deviation implies that the currency was stronger / weaker than the average exchange rate in December 2017.

(4) December 2019 budget execution. Source: 2019 report on the execution of the general consolidated budget, Ministry of Public Finance.

(5) As at end of December 2019. Source: Monthly Report of the Ministry of Public Finance.

Source: Eurostat and NBR calculations.



Strong Economic Growth



Romania's Economy: Macroeconomic Indicators



Overview

Strong Economic Growth

Sustainable Fiscal Policy

Prudent Public Debt Management

EU Funds Absorption

	2012	2013	2014	2015	2016	2017	2018	2019	2020
Macroeconomic Indicators									<i>Estimate</i>
Real GDP (% y-o-y)	2.1	3.5	3.4	3.9	4.8	7.1	4.4	4.1	4.1
Inflation rate (% , e.o.p.)	5.0	1.6	0.8	(0.9)	(0.5)	3.3	3.3 ¹	3.8	3.0
Inflation rate (% , annual average)	3.3	4.0	1.1	(0.6)	(1.5)	1.3	4.6 ¹	3.8	3.1
Budget balance (% GDP, cash)	(2.5)	(2.5)	(1.7)	(1.4)	(2.4)	(2.8)	(2.8)	(4.6)	(3.6)
Budget balance (% GDP, ESA2010)	(3.7)	(2.1)	(1.3)	(0.6)	(2.6)	(2.6)	(3.0)	(4.6)	(3.6)
Government debt (% GDP, EU methodology)	37.0	37.6	39.2	37.8	37.3	35.1	34.7	35.5	36.7
Exports of goods (% , y-o-y)	(0.5)	10.0	6.7	4.9	6.2	9.2	8.1 ^(S)	2.7 ²	4.5
Current account balance (% GDP)	(4.8)	(0.8)	(0.2)	(0.6)	(1.4)	(2.8)	(4.4)	(4.9)	(4.5)
Interest And Exchange Rates									
NBR policy rate (% , e.o.p)	5.25	4.0	2.75	1.75	1.75	1.75	2.50	2.50	2.50
Credit facility rate	9.25	7.00	5.25	3.25	3.25	2.75	3.50	3.50	3.50
Deposit facility rate	1.25	1.00	0.25	0.25	0.25	0.75	1.50	1.50	1.50
Average exchange rate (RON/EUR)	4.46	4.42	4.44	4.45	4.49	4.57	4.65 ¹	4.74	4.75
Labor Market Indicators									
ILO unemployment rate (%)	6.8	7.1	6.8	6.8	5.9	4.9	4.2	3.9	3.8

Source: National Institute of Statistics, National Commission for Strategy and Prognosis (Autumn forecast 2019), Budget Law no 50/2019, Fiscal Budgetary Strategy 2020-2022 (Ministry of Finance); Note: Budget balance (% of GDP cash and ESA2010) for the 2018-2019 period is estimated at the moment of the 2018 Budget adoption; Jan – Sep 2018 data.

(S) Semi-final data; 1 – final data; 2 - Assumption from November 2019 bugetary revision.

Growth Supported by Domestic Demand and Capital Formation



Overview

Strong Economic Growth

Sustainable Fiscal Policy

Prudent Public Debt Management

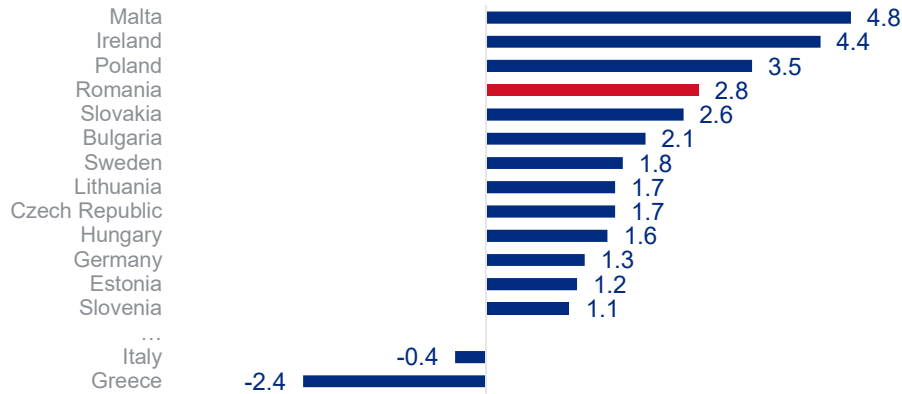
EU Funds Absorption

External Sector and Monetary Policy

Transaction Overview

Romania is One of the Fastest Growing Economies in the EU...

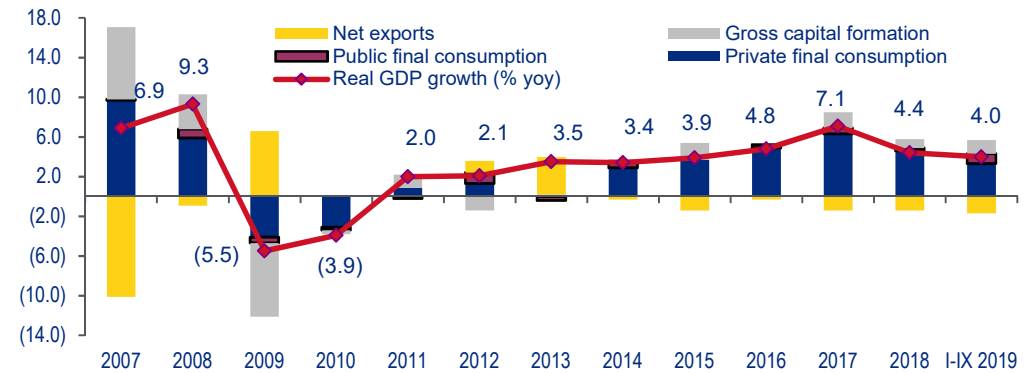
% GDP Growth, Average 2008–2018



Source: Eurostat

...with GDP Growth Underpinned by Strong Domestic Demand

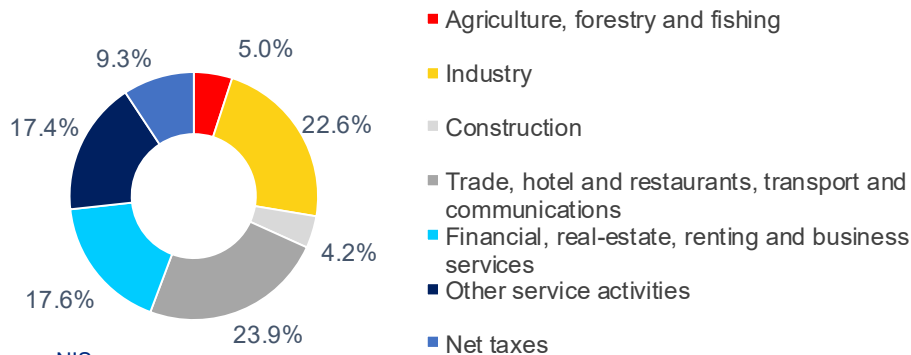
GDP Components, Percentage Points



Source: NIS

The Romanian Economy is Diversified

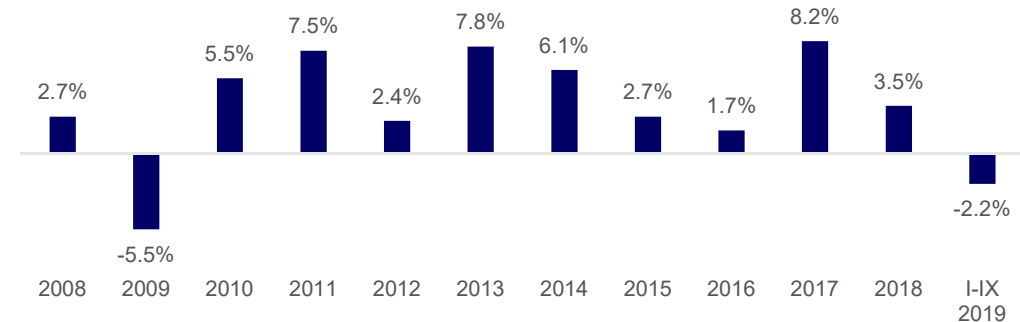
Structure of Gross Domestic Product by Sectors in Jan - Sep, 2019, %



Source: NIS

Industry Slump Offset by Consumption and Capital Formation

Real Change in Industrial Production, y-o-y, (base year 2015)



Source: NIS

Labour Market Conditions Supportive of Long-Term Growth



Overview

Strong Economic Growth

Sustainable Fiscal Policy

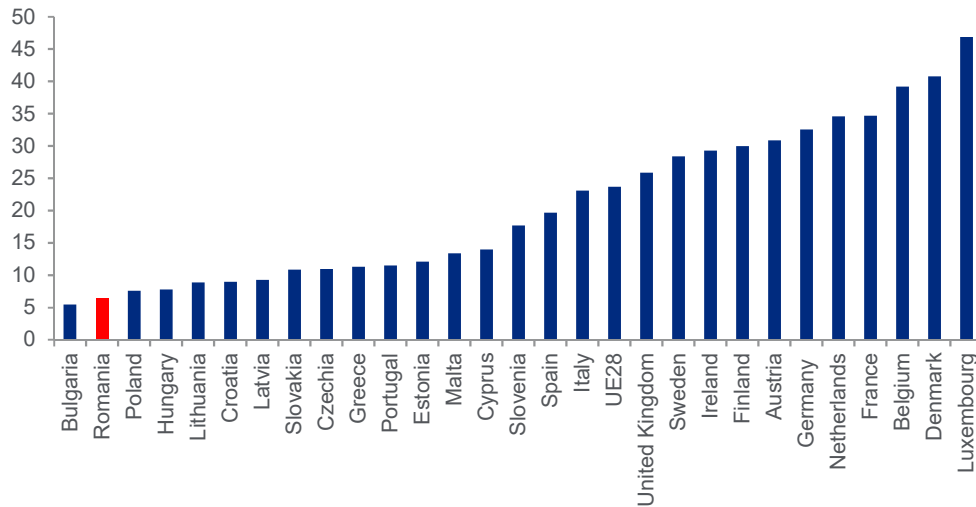
Prudent Public Debt Management

EU Funds Absorption

- Romanian labour costs per hour are among the most competitive in the EU
- Highly educated workforce: #54 / #187 in 2013 according to the United Nations Education Index⁽¹⁾
- Romania's unemployment rate remains substantially lower than the EU28 average. The ILO unemployment rate in January 2020 was 3.9%, one of the lowest in the EU member states.

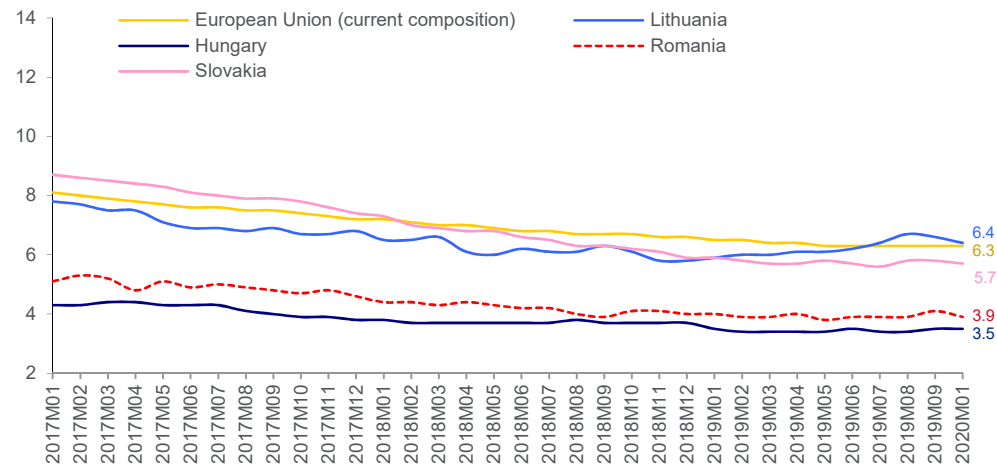
Low Labour Costs

Labour Costs per Hour as of 2018, EUR



Low Unemployment

Unemployment rate (monthly, seasonally adjusted), %



Source: Eurostat. Data according to ESA 2010 methodology

Source: Eurostat, ILO Methodology

(1) Based on 2013 data, the most recently available.



Fiscal Policy



2019 Budget: Overview and Assumptions



Overview

Strong Economic Growth

Sustainable Fiscal Policy

Prudent Public Debt Management

EU Funds Absorption

2019 Budget Execution – Deficit of 4.6% of GDP

- Revenues to the general consolidated budget, in the amount of RON 321.13 bn, increased by 8.8% in nominal terms compared to the same period of last year
 - Increases in the collection of: insurance contributions (+13.6%), corporate tax (+13.2%), excises (+10.3%);
 - The collection of VAT increased by 9.7% as compared to the same period of last year. Reimbursements from the EU amounted to RON 25.32 bn.
- The expenditures of the general consolidated budget, in the amount of RON 369.43 bn, increased in nominal terms by 14.7% YoY compared to the same period of last year
 - Personnel expenditures increased by 18.8%;
 - Expenditures on goods and services increased by 18.3%, while the expenditure for social assistance increased by 13.2%;
 - Investment expenditure amounted to RON 43.61 bn, 27.4% higher than the same period of last year. Subsidies expenditure amounted to RON 7.1 bn (0.7% of GDP), at the same level as in 2018.

The execution of the general consolidated budget, during the period of 1 January 2019 to 31 December 2019, ended with a cash deficit of RON 48.3 bn, or 4.6 per cent. of GDP.

Macroeconomic Assumptions for the 2019 Budget

2019 August revision

2019 November revision

GDP (RON bn)	1,031.0	1,040.8
Real Growth Rate (%)	5.5	4.0
Inflation / end of year (%)	3.2	3.8
Inflation / annual average (%)	3.4	3.8
Average number of employees ('000s)	5,282	5,170
No. of unemployed persons registered as at the end of year ('000s)	287	287
- Rate of registered unemployment (%)	3.2	3.2
Gross average salary (RON / month)	5,163	4,945
Goods exports – growth rate (%)	8.9	2.7
Goods imports – growth rate (%)	9.4	4.0

Source: Ministry of Public Finance

2020 Budget: Overview and Key Assumptions



Overview

Strong Economic Growth

Sustainable Fiscal Policy

Prudent Public Debt Management

EU Funds Absorption

Revenue Measures

- Correcting the measures from the emergency government ordinance 114/2018:
 - Eliminating bank asset tax starting with 2020
 - Gradual elimination of the turnover tax in energy sector
- Minimum wage increase starting from 1 January 2020 with 7,2% from 2080 Ron to 2230 Ron per month.

Expenditure Measures

- Starting with January 2020, the amount of bonuses, allowances and compensations are maintained at the level of December 2019 (e.g.: food allowance, merit allowance, holiday vouchers, etc.)
- Starting with January 1, 2020, the monthly allowances for public dignity functions and the functions assimilated to them, are maintained at the level of December 2019;
- Streamlining of the central public administration, considering the reduced number of ministries to 16, with expected savings in personnel and goods and services.
- Reducing funds allocated to the National Program of Local Development (PNDL) and increasing the scope for EU funds in local investment.

Macroeconomic Assumptions for the 2020 Budget

GDP (RON bn)	1,129.2
Real Growth Rate (%)	4.1
Inflation / end of year (%)	3.1
Inflation / annual average (%)	3.0
Average number of employees ('000s)	5,268
No. of unemployed persons registered as at the end of year ('000s)	275
- Rate of registered unemployment (%)	3.0
Gross average salary (RON / month)	5,429
Goods exports – growth rate (%)	4.5
Goods imports – growth rate (%)	5.5

Source: Ministry of Public Finance



January 2020 Budget Execution – Deficit of 0.04% of GDP

- Revenues to the general consolidated budget, in the amount of RON 27.55 billion, increased by 6.8% in nominal terms compared to the same period of last year.
 - Increases in the collection of: social security contributions (+10%), income tax (+14.4%) and excises (+13.9%).
 - The collection of VAT decreased by 4% as compared to the same period of last year.
 - Revenues from taxes on the use of goods have increased by 25.3%.
 - Non-tax revenues increased by 11.6% as compared to the same period of last year.
 - Reimbursements from the EU: RON 1.11 billion.
- The expenditures of the general consolidated budget, in the amount of RON 28 billion (2.5% of GDP), increased in nominal terms by 11.6% YoY compared to the same period of last year.
 - Personnel expenditure increased by 11.9%, compared to the same period of last year.
 - Goods and services expenditures increased by 2.8%, while the expenditure for social assistance increased by 15.1%.
 - Investment expenditure amounted to RON 1.31 billion, almost three times higher than the same period of last year.
 - Other transfer expenses, which includes Romania's contribution to the European Union budget, rose by 21.0% compared to the same period of last year.



Prudent Public Debt Management



Public Debt is on a Sustainable Path



Overview

Strong Economic Growth

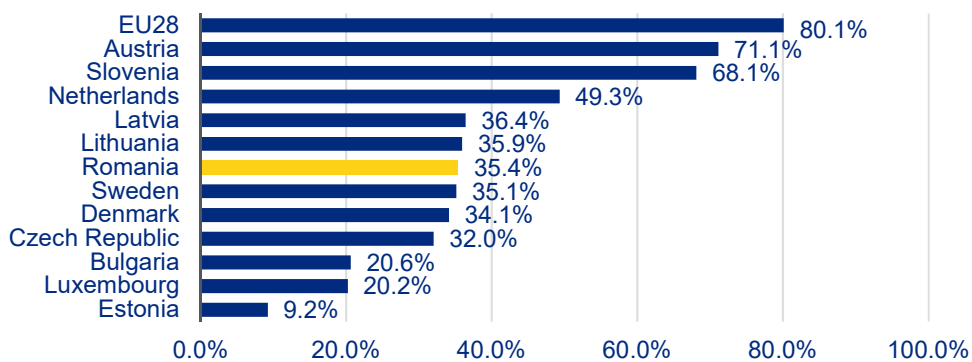
Sustainable Fiscal Policy

Prudent Public Debt Management

EU Funds Absorption

Romania has one of the lowest Debt / GDP Ratio in the EU

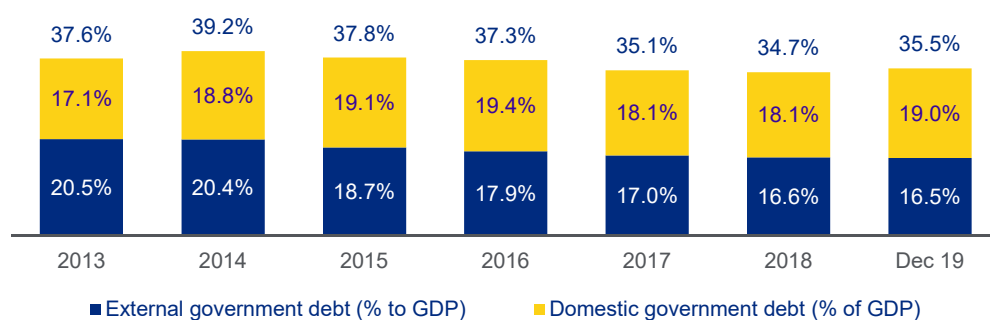
General Government Debt / GDP Q3 2019, %



Source: Eurostat News release no. 15/21.01.2020.

Debt / GDP Ratio is Stable...

General Government Debt / GDP ESA 2010 – December 2019

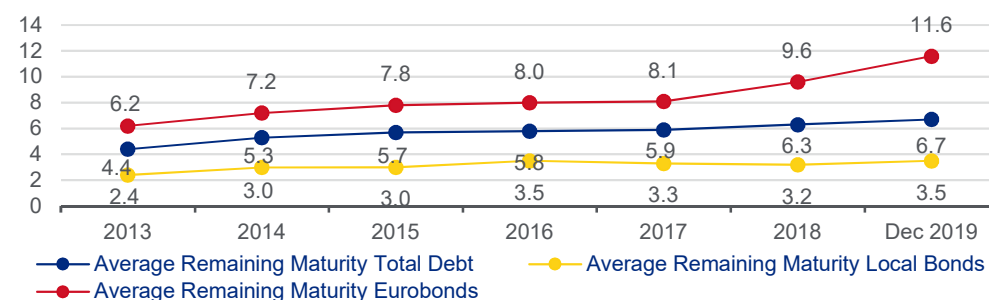


Source: Ministry of Public Finance – (EU Methodology).

(% of GDP)	2016	2017	2018	2019	2020F
Gross Financing need, Out of which:					
– Budgetary Deficit	2.4%	2.8%	2.8%	4.6%	3.6%
– Refinancing of Public Debt	6.6%	4.8%	4.6%	4.1%	4.0%
Foreign Currency Buffer⁽¹⁾	3.6%	2.8%	2.6%	1.8%	1.6%
Net Government Debt⁽¹⁾⁽²⁾	33.7%	32.3%	32.1%	33.7%	35.1%

...with a Prudent Maturity Profile

Average Remaining Maturity in years



Source: Ministry of Public Finance (public government debt according to the national legislation, without temporary financing).

(1) Source: Ministry of Public Finance, Historical compilation of the Public Debt Bulletin; (2) Calculated as Gross government debt (EU Methodology) – Foreign currency buffer; Note: for 2019 and 2020, the source for GDP data is NCSP (Winter Forecast, February 2020)

Stable Government Borrowing Profile



Overview

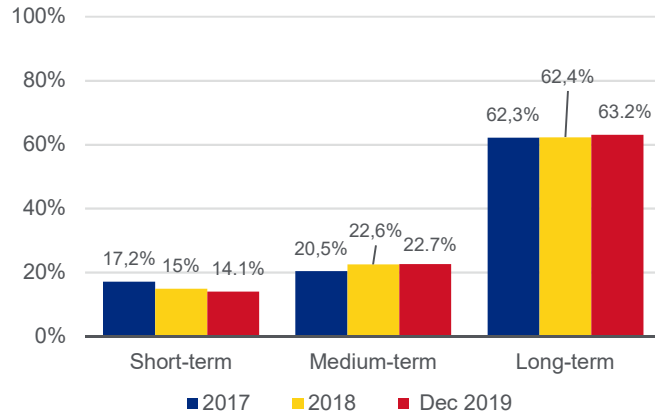
Strong Economic Growth

Sustainable Fiscal Policy

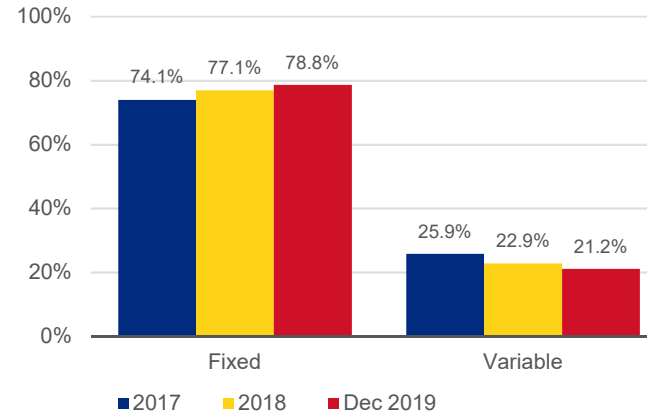
Prudent Public Debt Management

EU Funds Absorption

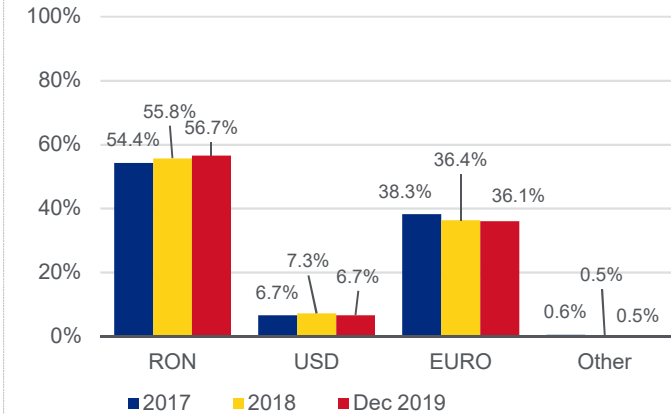
Increasingly Long Tenor Borrowings...



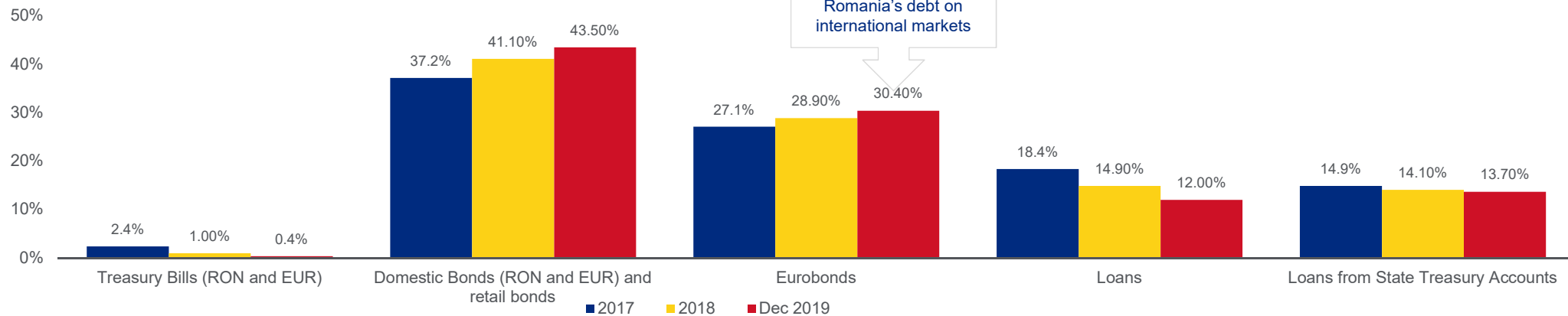
...Mostly Paying Fixed Interest...



...Primarily in RON and EUR...



...are Reinforced by a Stable Mix of Funding Instruments



Source: Ministry of Public Finance. Historical compilation of the Public Debt Bulletin.

Note: Based on national legislation.

Investment Grade Ratings Underpin Strong Market Performance



Overview

Strong Economic Growth

Sustainable Fiscal Policy

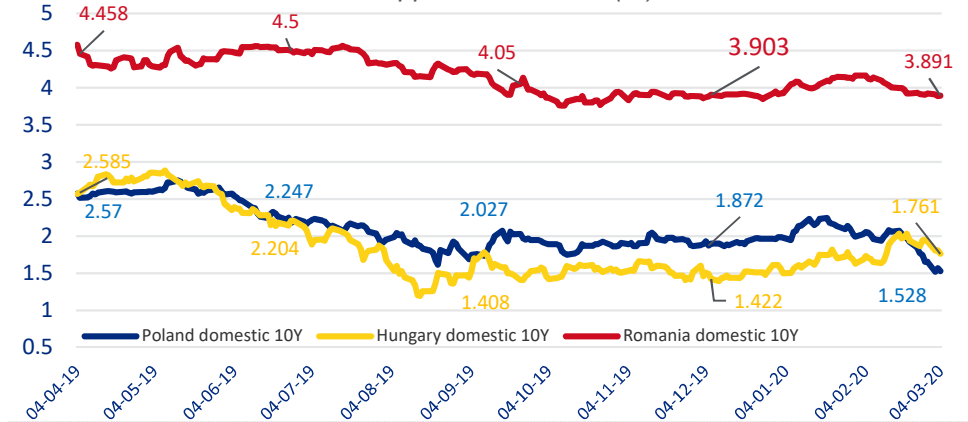
Prudent Public Debt Management

EU Funds Absorption

- Romanian Eurobond yields have shown resilience during volatile periods and are still at relatively low levels while strong spread compression happened across the curve after Brexit referendum and during 2017
- From the start of 2018, Romanian domestic yields have experienced episodes of volatility, in line with the region, however have been compressing in 2019 given improved market sentiment

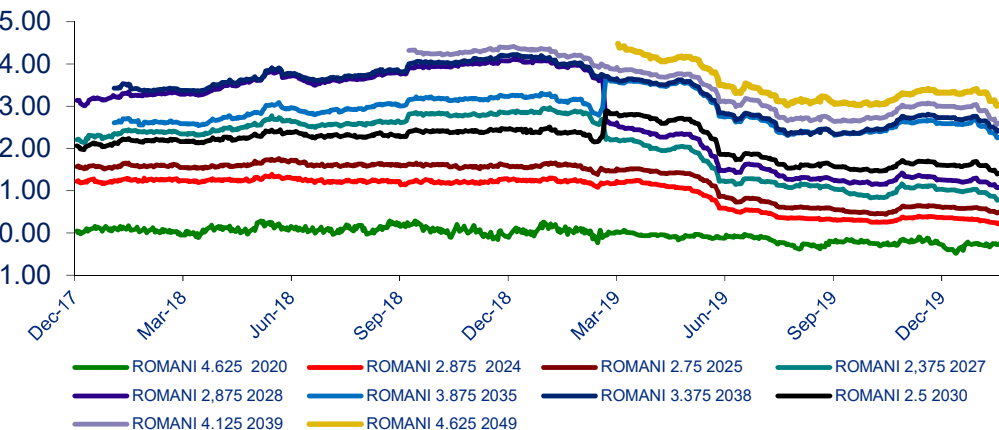
Yields have been relatively stable, on Romania's domestic debt...

Domestic Yields PL, HU, RO – Approx. 10Y Tenor (%)



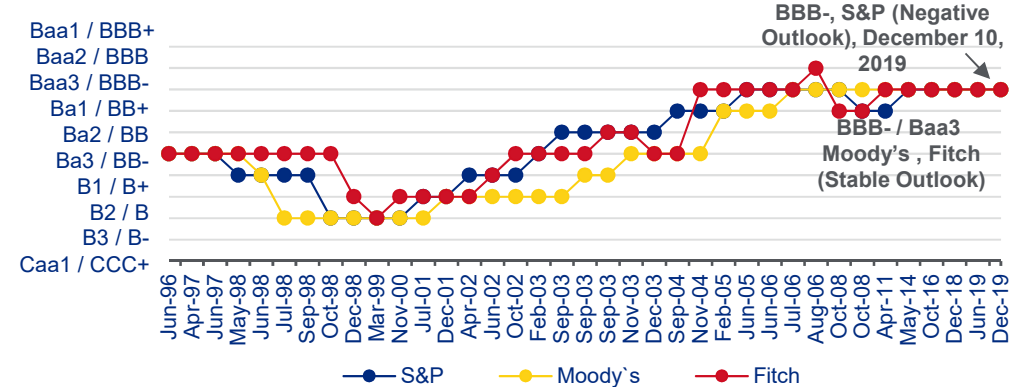
...and on its foreign debt

Bid Yields of Romanian EUR Eurobonds, %



Romania Regained Full Investment Grade Status in 2014

Romania's Credit Rating History



Source: Market data.



Instruments

- On the domestic government securities market, MFP intends to issue a wide range of maturities between 6 months and 15 years on the interbank market, building liquid benchmarks to an equivalent of about EUR 2.5 billion
- Starting 2018, a new programme of government securities dedicated to retail investors was launched – maturities between 1-5 years, bonds distributed through local Treasury offices and postal units. In 2020 the indicative target amount to be issued for retail investors is RON 6 billion (equivalent to around 10% of the government securities issued on domestic market)

Well diversified Investor base

- Holders of domestic market government securities (end of December, 2019) ⁽¹⁾
 - Local commercial banks 45.7%
 - Pension funds 19.4%
 - Non-residents 19.3%
- Average participation in Eurobonds issues ⁽²⁾
 - Fund managers 60–70%
 - Institutional investors 10–20%
 - Commercial and private banks 15–25%
 - Central banks 3–5%
- Geographical distribution of Eurobond issuances in EUR ⁽²⁾ – mostly Western European Countries (Germany and Austria around 8% for issues of 10Y and 20% for longer tenors, the UK around 27% on average, France and Benelux around 10% etc.); US (around 29-30%); Central and Eastern European states (usually around 10%) and investors from the Middle East and Asia (with an average participation of around 2–3%).

(1) Source: Ministry of Public Finance. Public Debt Bulletin.

(2) Source: Ministry of Public Finance (own calculation).

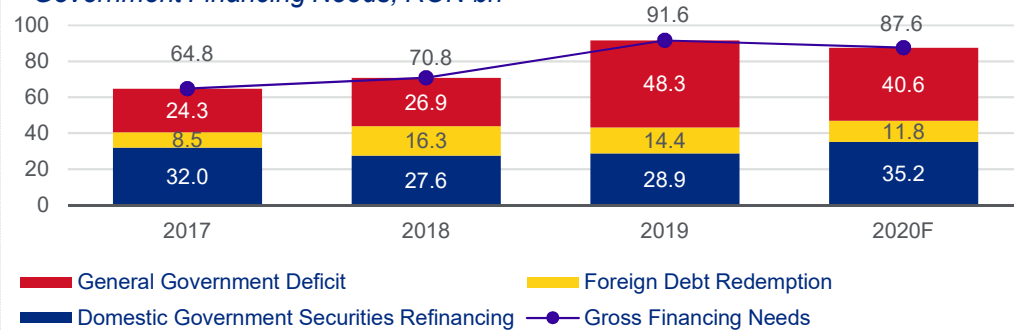


Romania Enjoys Robust Market Access

- Romania's funding sources are well diversified:
 - Domestic market** via RON and EUR government securities issued on the interbank market and retail government securities;
 - External market** (Eurobonds, Institutional Loans from IFIs and government agencies).
- A hard currency buffer has been built up to cover around four months of gross funding needs

Financing Needs

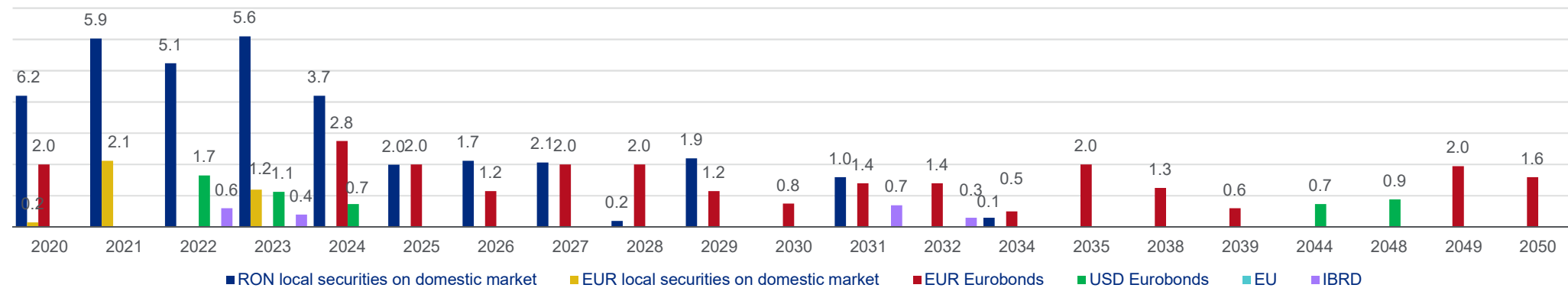
Government Financing Needs, RON bn



Source: Ministry of Public Finance (own calculation)

Government Debt Maturity Structure is Well Distributed across a Long Horizon

Redemption Profile of Government Securities and External Loan Facilities, EUR bn



Source: Ministry of Public Finance. Data as of March 4, 2020.

Prudent Debt Management Policy (Cont'd)



Overview

Strong Economic Growth

Sustainable Fiscal Policy

Prudent Public Debt Management

EU Funds Absorption

Sovereign Debt Risk Management Targets

	Parameters ¹	Levels as of December 2019	Levels as of December 31, 2018 ²	Indicative Targeted Min / Max Ranges (2019–2021) ⁵
Currency Risk	■ Share of domestic currency debt, % of total	49.8	48.6	45–60
	■ Share of EUR debt out of total foreign-currency denominated debt, %	83.4	82.2	80–95
Refinancing Risk	■ Debt maturing in one year, % of total	12.0	14.0	10–20
	■ Local currency debt maturing in one year, % of total	17.0	17.0	15–25
	■ ATM ³ for total debt, years	6.7	6.3	6.0–7.0
	■ ATM ³ for local currency debt, years	4.1	4.0	3.5–5.0
Interest Rate Risk	■ Debt re-fixing in one year, % of total	14.0	17.0	10–20
	■ Local currency debt re-fixing in one year, % of total	17.0	16.0	15–25
	■ ATR ⁴ for total debt, years	6.8	6.3	6.0–7.0
	■ ATR ⁴ for local currency debt, years	4.1	4.0	3.5–5.0

Objectives of the Debt Management Strategy

- Cover funding needs of the central government, while minimizing medium and long term debt costs
- Limit risks for the government public debt portfolio
- Develop the domestic market for government securities

Strategic Guidelines During 2019–2021

- The net financing mainly in local currency is as a move to further facilitate the development of the domestic market of government securities and help mitigate foreign currency exposure, at the same time considering the domestic market absorption capacity and, in general, the demand for debt instruments denominated in lei, as well as the need for a further diversification of the investor base of government securities.
- Depending on the market circumstances, the Ministry of Public Finance takes into consideration to partially pre-secure the next year's estimated financing needs.
- Pursue a smooth redemption profile, avoiding to the extent possible the concentration of principal repayments/refinancing of government securities in the short-term.
- Mitigate the refinancing risk and the liquidity risk by maintaining a foreign currency buffer at a comfortable level and possibly by using other instruments depending on the terms and conditions thereof.
- Maintain a presence on the international capital markets, through issuances of Eurobonds mainly in Euro and access the USD market or other foreign currency markets on an opportunistic basis, giving consideration to the extension of the debt portfolio average maturity and taking into account the cost/risk ratio associated thereto and the diversification of the investment base.
- In the process of external financing, the debt will be contracted mainly in euros.
- The euro issuances on the domestic market will be considered only if there is a special demand from domestic investors in the absence of alternative lending instruments, provided that there is a beneficial maturity/cost ratio.
- Maintain the exposure to interest rate risk under control by monitoring the share of domestic debt refixing within the next year and the average time to refix for the total portfolio.
- Use financing instruments offered by the international financing institutions to benefit of the favorable terms and conditions attached to those instruments.

(1) Relates to government public debt according to national legislation excluding the General Current Account; (2) Risk indicators presented are calculated for public government debt according to national legislation, excluding loans from availabilities of the State treasury account (temporary financing), in line with the limits established in the Debt Management Strategy 2018–2020; (3) ATM – average time to maturity; (4) ATR – average time to re-fixing; (5) The revised Debt Management Strategy for 2019–2021 was approved by the Government at the beginning of September 2019, proposing indicative targets for managing the financial risks of the debt portfolio.

Source: Ministry of Public Finance: Historic compilation of the Public Debt Bulletin.



Improved EU Funds Absorption



EU Funds Absorption has Accelerated in the Past Years



Overview

Strong Economic Growth

Sustainable Fiscal Policy

Prudent Public Debt Management

EU Funds Absorption

Operational Program	Development Objective	Allocation 2007–2013	Absorption Rate							
			Dec 2014	Dec 2015	Dec 2016	Dec 2017	Dec 2018	Dec 2019	Jan 2020	Feb 2020
		EUR bn	%	%	%	%	%	%	%	%
RO Program⁽¹⁾	Economic, social, balanced and sustainable regional development	3.71	57	64	85	93	100	100	100	100
SOP⁽²⁾ Environment	Protect and improve the environment and living standards	3.98	42	62	79	84	94	94	94	94
SOP Transport	Modernization and development of European priority transport axes within Romania and the national transport infrastructure as a whole	3.76	57	62	77	81	92	92	92	92
SOP Increase of Economic Competitiveness	Fostering growth towards a knowledge-based economy	2.54	57	76	105 ³	100	100	100	100	100
SOP Human Resources Development	Open, knowledge-based society through provision of conditions facilitating human resources development	3.20	47	55	73	91	91	91	91	91
OP Administrative Capacity Development	Help increase the responsiveness of Romania's public administration and judicial system	0.21	72	89	99	100	100	100	100	100
OP Technical Assistance	Strengthening the capacity of beneficiaries to prepare and implement EU financed projects	0.17	55	81	113 ³	100	100	100	100	100
Total		17.57⁴	52	63	83	89	95	95	95	95

- To assure the highest level of absorption, Romania implemented the following structural measures:
 - Strengthening and improving of the monitoring at the level of large infrastructure projects in order to speed up implementation
 - Active promotion by the Government of the alternative use of EU funds, through similar projects
 - Further reallocation among priority goals of various programmes
 - Increase the administrative capacity of programming departments through the use of European Investment Bank expertise
 - Extending the categories of eligible expenditures, allowing the reimbursement for expenditure already realised under the approved projects
 - Phasing of projects between the 2007–2013 and the 2014–2020 programming periods

Note: The final absorption rate can be calculated after the acceptance by the EC of the final documents for closure, that were submitted by the Member States up to March 31, 2017.

(1) Abbreviations: Regional Operational; (2) Abbreviations: Sectoral Operational Program; (3) Includes amount requested through top-up mechanism; (4) The 2007–2013 allocation was modified due to the amounts decommitted.

Source: Ministry of European Funds

EU Funds Absorption under the 2014–2020 Programming Period



Overview

Strong Economic Growth

Sustainable Fiscal Policy

Prudent Public Debt Management

EU Funds Absorption

Operational Program	Funds Allocated, EUR bn	Absorption Rate (Amount Requested to EC) (%)						
		Dec 2015	Dec 2016	Dec 2017	Dec 2018	Dec 2019	Jan 2020	Feb 2020
OP Technical Assistance	0.25	0	0	23.28	37.29	56.90	56.90	58.56
OP Competitiveness	1.33	0	0	6.48	17.01	25.38	25.38	26.02
OP Human Capital (including Youth Employment Initiative: EUR 0.11bn)	4.37	0	0	0.09	14.87	25.28	25.28	26.25
OP Administrative Capacity	0.55	0	0	4.15	12.95	23.23	23.23	23.27
OP Large Infrastructure	9.22	0	0	10.13	17.77	25.24	25.24	25.96
OP Regional	6.76	0	0	0.41	12.78	22.86	22.86	22.86
OP for SME's Initiative*	0.10	0	0	93.09	-	-	-	-
OP's for European Territorial Cooperation	0.48	0	0.54	1.76	9.56	21.19	22.88	22.23
OP Aid for the Most Deprived	0.44	0	0.97	17.37	17.35	30.27	30.27	30.27
Total	23.50	0	0.02	5.62	15.65	24.87	24.90	25.40

- Cohesion funds are aimed at reducing disparities between the various regions and the lags of the least-favoured regions;
- Aside from cohesion funds, during the 2014–2020 period, Romania has additional available financings of approx. EUR 20bn, under the Common Agricultural Policy;
- At the end of December 2019, the total amounts received from the European Commission, pre-financing and reimbursements related to the operational programs financed by the FESI and FEAD (POAD), are at approx. EUR 12 bn, which means approx. 38% of the EU allocation for these programs (about EUR 31 bn).

Increased Focus on Controls

- **Performance Oriented:** There is a monitoring framework, including milestones and specific targets corresponding to each operational programme
 - Their completion is verified for 2018 and 2023
- **Improving efficiency of EU funds spending:** the EC is putting in place performance reserves in amounts ranging between 5 and 7 percent of (most of) the allocations under each priority within the operational programmes
 - The performance reserve amounts will be released subject to the achievement of the milestones set for 2018
- **Ex-ante conditionalities** to ensure the conditions for effective cohesion policy investments and predictability of national sectorial policies

The impact of EU Funds on the Romanian economy is set to increase given Romania's strides in improving EU fund absorption and the increased focus on European Commission Control

Note: The 2014–2020 allocations for Technical Assistance, Large Infrastructure and Regional Operational OP's was modified due to the financial reallocations between the programmes.

* The OP for SME's Initiative was included in the OP Regional by EC approval from 16.10.2018.

Source: Ministry of European Funds.



Thank you!

